

# LIGHT CAVALRY

(A) UNISON

4

3

(B)

6 8 4

(C) UNISON

UNISON

UNISON

(D) LEAD

3 LEAD

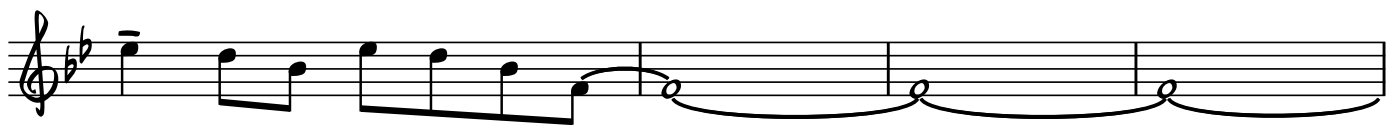
(b) 3



(E)



(F)

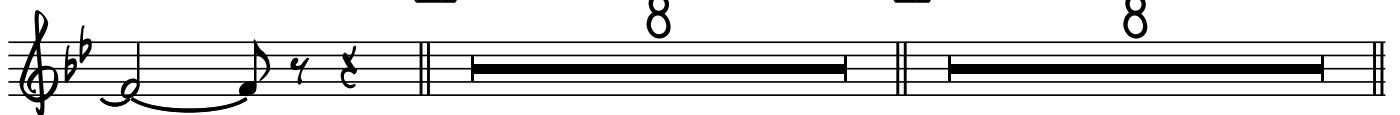


(G)

8

(H)

8



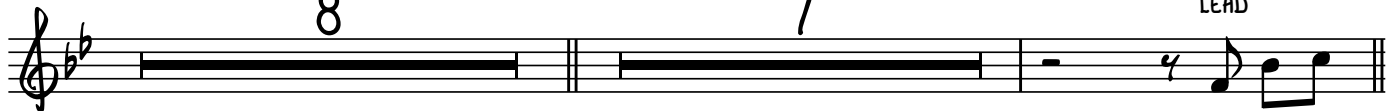
(I)

8

(J)

7

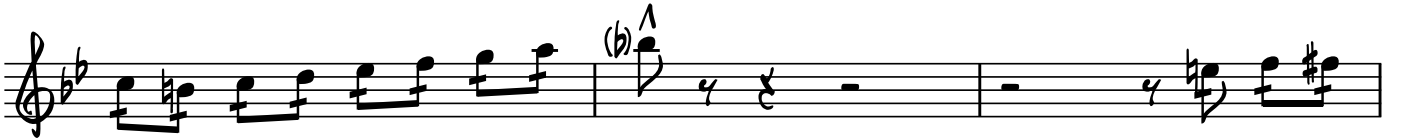
LEAD



(R)



(L)

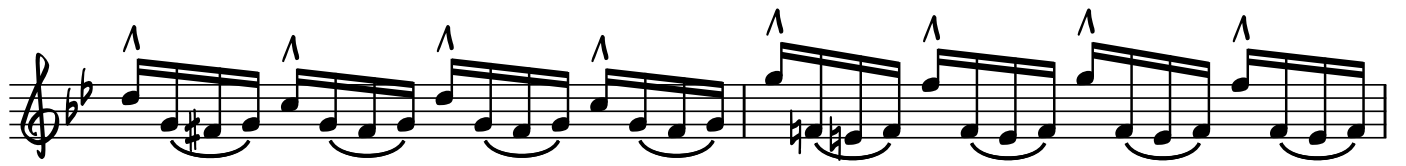


(M)

2ND X ONLY

(N)

(O)



D.S. AL CODA



♩ LEAD

